



Each of the seven puzzles leads to a word, or in one case a phrase.

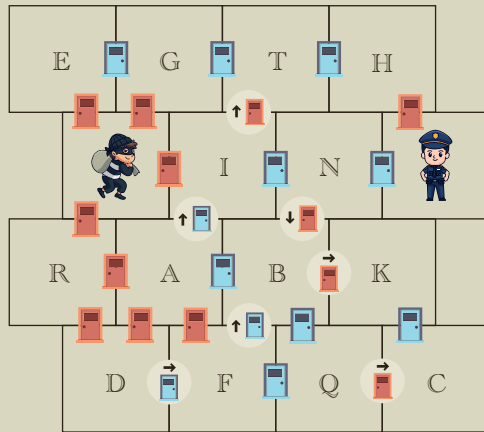
Write the answers into the appropriate boxes below, and then use just the letters on the front of the card to deduce a description of GCHQ's work.

| | | | | | | | | | | | | | | | | | | | | | | | |
|---|---|---|---|---|---|---|---|---|---|---|---|---|---|---|---|---|---|---|---|---|---|---|---|
| 6 | 6 | 6 | 6 | 6 | 6 | 6 | 6 | 2 | 2 | 2 | 2 | 2 | 2 | 2 | 2 | 7 | 7 | 7 | 7 | 7 | 7 | 7 | 7 |
| 5 | 5 | 5 | 5 | 5 | 5 | 5 | 5 | 3 | 3 | 3 | 3 | 3 | 3 | 3 | 3 | 3 | 3 | 3 | 3 | 3 | 3 | 3 | 3 |
| 1 | 1 | 1 | 1 | 1 | 1 | 1 | 1 | 4 | 4 | 4 | 4 | 4 | 4 | 4 | 4 | | | | | | | | |

1 Somewhere on this card is a special seven letter word which has no repeated letters, and no letters which are next to each other in the alphabet. Can you find it?

3 The robber has to find a route through the house. He can't go through the same coloured door twice in a row, and cannot move against any arrows.

Eventually he gets caught by the police. How was he acting?



6 Solve this code. It has lots of **four-letter** words!
 PIGMIHM DRP MHSIAMA QDMPM MBNDQ **UITL-FMQQML** NBLFP HRGMP:
 LTOY, ILFR, PRLR, ROOY, GRYR, TPDR, HILL, ARHB.
 PDM FMUQ R SFTM QI DML IWH HRGM OTQ SRH YIT WILE BQ ITQ?

7 Find an appropriate 7-letter word...
 ✓ = letter in right place
 ? = letter present, but in the wrong place

| | | | | | | | |
|----|---|---|---|---|---|---|---|
| UK | | | ? | | | ✓ | |
| FR | | | ? | | | ? | ✓ |
| DE | | | ? | ? | ? | | |
| IT | | ? | ? | | | ✓ | ✓ |
| ES | ✓ | ? | ? | | ✓ | | |

2 There is some driftwood in these streams... but where should it be?

AZ S N I I E N
M A O N E H H D N T B U E
E L R E A B U E
G A N A I
G N E S E
M S

4 My gifts from Santa are wrapped in pairs this year - but which one is missing?

| | | | | | | |
|-----|-----|-----|-----|-----|-----|-----|
| L/S | I/W | E/P | A/P | E/T | E/R | R/S |
| C/C | M/O | N/P | S/U | O/T | E/L | E/R |
| N/P | E/E | K/N | D/L | A/A | C/N | E/T |
| C/J | O/O | O/U | B/R | N/O | A/O | K/L |
| H/S | A/H | A/N | D/M | O/P | A/O | O/P |

5 The letters in TWO UV PAIRS have the values 0,1,2,...,9 in some order, with each letter representing a different digit.

UV+UV+V=VAR
 R×P×P=AIR
 SO+SO=VOW

What is 1234567?

Follow us or scan the QR code to find the answers soon!



X @in
@GCHQ

Y

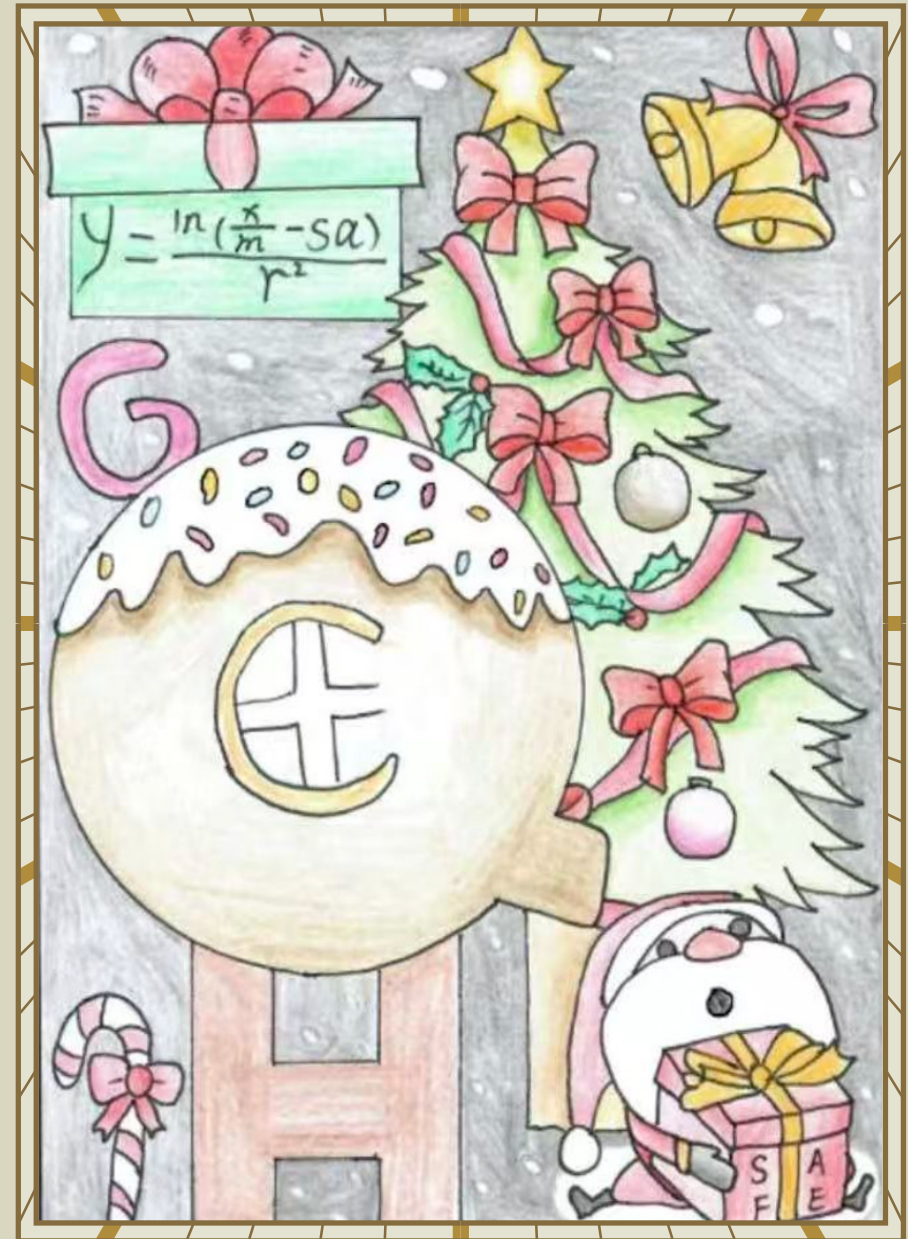
C

D

U

T

R



E

H

K

O

N

L



Each of the seven puzzles leads to a word, or in one case a phrase.

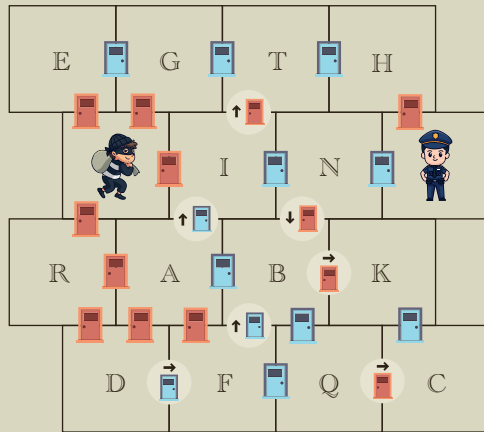
Write the answers into the appropriate boxes below, and then use just the letters on the front of the card to deduce a description of GCHQ's work.

| | | | | | | | | | | | | | | | | | | | | | | | |
|---|---|---|---|---|---|---|---|---|---|---|---|---|---|---|---|---|---|---|---|---|---|---|---|
| 6 | 6 | 6 | 6 | 6 | 6 | 6 | 6 | 2 | 2 | 2 | 2 | 2 | 2 | 2 | 2 | 7 | 7 | 7 | 7 | 7 | 7 | 7 | 7 |
| 5 | 5 | 5 | 5 | 5 | 5 | 5 | 5 | 3 | 3 | 3 | 3 | 3 | 3 | 3 | 3 | 3 | 3 | 3 | 3 | 3 | 3 | 3 | 3 |
| 1 | 1 | 1 | 1 | 1 | 1 | 1 | 1 | 4 | 4 | 4 | 4 | 4 | 4 | 4 | 4 | | | | | | | | |

1 Somewhere on this card is a special seven letter word which has no repeated letters, and no letters which are next to each other in the alphabet. Can you find it?

3 The robber has to find a route through the house. He can't go through the same coloured door twice in a row, and cannot move against any arrows.

Eventually he gets caught by the police. How was he acting?



6 Solve this code. It has lots of **four-letter** words!
 PIGMIHM DRP MHSIAMA QDMPM MBNDQ **UITL-FMQQML** NBLFP HRGMP:
 LTOY, ILFR, PRLR, ROOY, GRYR, TPDR, HILL, ARHB.
 PDM FMUQ R SFTM QI DML IWH HRGM OTQ SRH YIT WILE BQ ITQ?

7 Find an appropriate 7-letter word...
 ✓ = letter in right place
 ? = letter present, but in the wrong place

| | | | | | | | |
|----|---|---|---|---|---|---|---|
| UK | | | ? | | | ✓ | |
| FR | | | ? | | | ? | ✓ |
| DE | | | ? | ? | ? | | |
| IT | | ? | ? | | | ✓ | ✓ |
| ES | ✓ | ? | ? | | ✓ | | |

2 There is some driftwood in these streams... but where should it be?

AZ S N I I E N
 M A O N E H H D N T B U E
 E L R E A B U E
 G A N A I
 G N E S E

4 My gifts from Santa are wrapped in pairs this year - but which one is missing?

| | | | | | | |
|-----|-----|-----|-----|-----|-----|-----|
| L/S | I/W | E/P | A/P | E/T | E/R | R/S |
| C/C | M/O | N/P | S/U | O/T | E/L | E/R |
| N/P | E/E | K/N | D/L | A/A | C/N | E/T |
| C/J | O/O | O/U | B/R | N/O | A/O | K/L |
| H/S | A/H | A/N | D/M | O/P | A/O | O/P |

5 The letters in TWO UV PAIRS have the values 0,1,2,...,9 in some order, with each letter representing a different digit.

UV+UV+V=VAR
 R×P×P=AIR
 SO+SO=VOW

What is 1234567?

Follow us or scan the QR code to find the answers soon!



X @in
 @GCHQ

Y

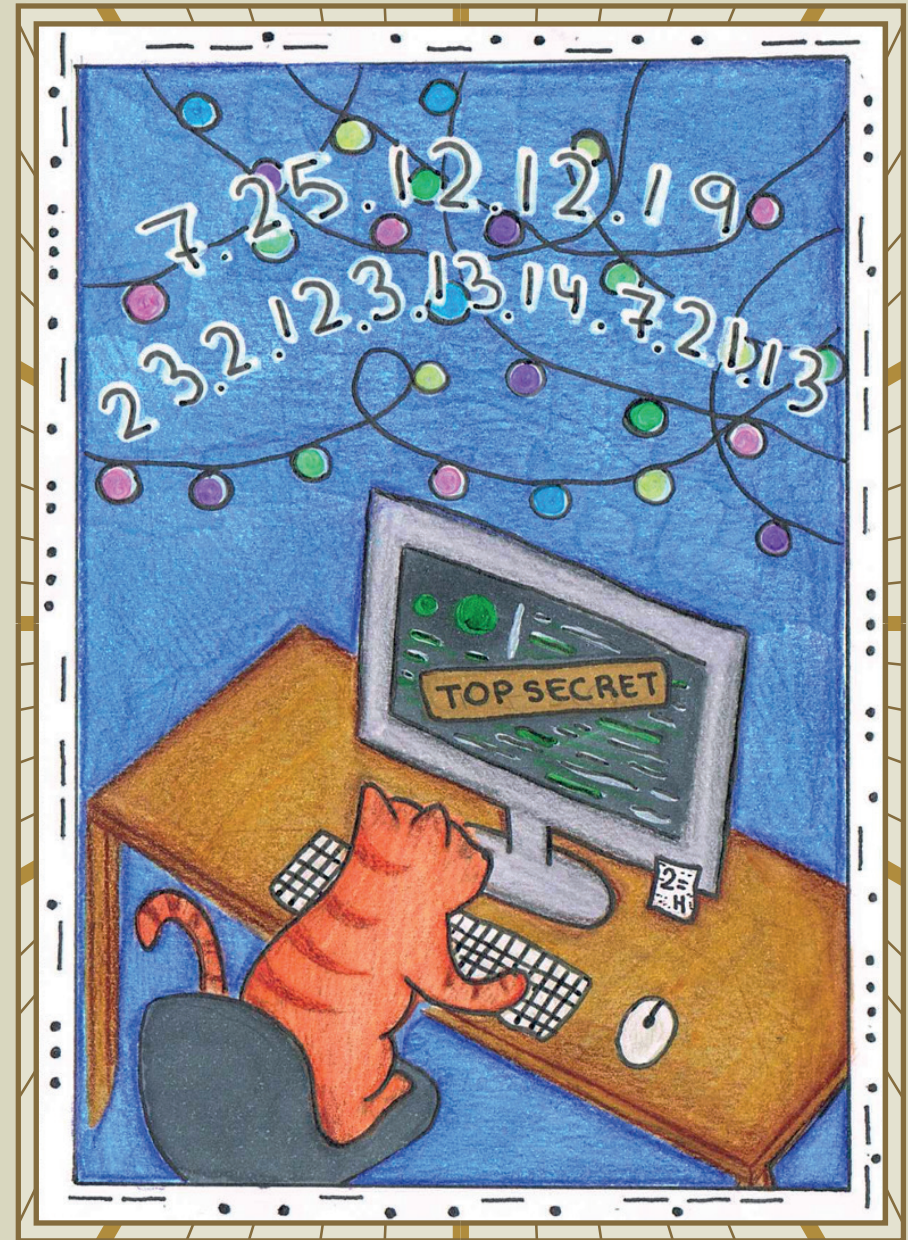
C

D

U

T

R



E

H

K

O

N

L



Each of the seven puzzles leads to a word, or in one case a phrase.

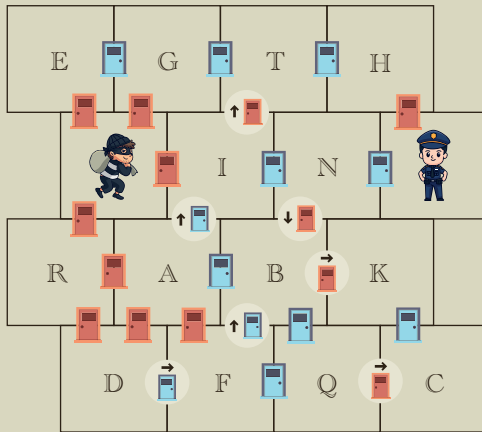
Write the answers into the appropriate boxes below, and then use just the letters on the front of the card to deduce a description of GCHQ's work.

| | | | | | | | | | | | | | | | | | | | | |
|---|---|---|---|---|---|---|---|---|---|---|---|---|---|---|---|---|---|---|---|---|
| 6 | 6 | 6 | 6 | 6 | 6 | 6 | 6 | 2 | 2 | 2 | 2 | 2 | 2 | 7 | 7 | 7 | 7 | 7 | 7 | 7 |
| 5 | 5 | 5 | 5 | 5 | 5 | 5 | 5 | 3 | 3 | 3 | 3 | 3 | 3 | 3 | 3 | 3 | 3 | 3 | 3 | 3 |
| 1 | 1 | 1 | 1 | 1 | 1 | 1 | 1 | 4 | 4 | 4 | 4 | 4 | 4 | | | | | | | |

1 Somewhere on this card is a special seven letter word which has no repeated letters, and no letters which are next to each other in the alphabet. Can you find it?

3 The robber has to find a route through the house. He can't go through the same coloured door twice in a row, and cannot move against any arrows.

Eventually he gets caught by the police. How was he acting?



6 Solve this code. It has lots of **four-letter** words!
 PIGMIHM DRP MHSIAMA QDMPM MBNDQ **UITL-FMQQML** NBLF'P HRGMP:
 LTOY, ILFR, PRLR, ROOY, GRYR, TPDR, HIIL, ARHB.
 PDM FMUQ R SFTM QI DML IWH HRGM OTQ SRH YIT WILE BQ ITQ?

7 Find an appropriate 7-letter word...
 ✓ = letter in right place
 ? = letter present, but in the wrong place

| | | | | | | |
|----|---|---|---|---|---|---|
| UK | | | ? | | ✓ | |
| FR | | | ? | | ? | ✓ |
| DE | | | ? | ? | ? | |
| IT | | ? | ? | | | ✓ |
| ES | ✓ | ? | ? | | ✓ | ✓ |

2 There is some driftwood in these streams... but where should it be?

AZ S N I I E N
 M A O N E H H D N T B U E
 E L R E A B U E
 G A N A I
 G N E S E

4 My gifts from Santa are wrapped in pairs this year - but which one is missing?

| | | | | | | |
|---|---|---|---|---|---|---|
| L | I | E | A | E | R | S |
| C | M | N | S | O | E | R |
| N | E | K | D | A | C | E |
| C | O | O | B | N | A | K |
| H | A | A | D | O | A | O |
| S | H | N | M | P | O | P |

5 The letters in TWO UV PAIRS have the values 0,1,2,...,9 in some order, with each letter representing a different digit.

UV+UV+V=VAR
 R×P×P=AIR
 SO+SO=VOW

What is 1234567?

Follow us or scan the QR code to find the answers soon!



X @ GCHQ
 @GCHQ

Y

C

D

U

T

R

E

H

K



O

N

L